



WHO – Regions for Health Network

MIGHRER MIGrants and Healthcare: responses by European Regions



Marco Biocca

**Regional Agency for Health and Social Care
of Emilia-Romagna (Italy)**



REGIONS FOR HEALTH NETWORK
in Europe

In the new Europe, regions within countries are a powerful engine of change and progress.

The **Regions for Health Network (RHN)**, founded in 1992, is a partnership of regions across Europe, committed to strengthening the focus within countries on better health.

It includes more than 40 regions from 18 countries.

Why MIGHRER ?

Modified human geography
of societies in the world

Vulnerabilities and difficulties
in accessing adequate care

Challenges for health systems.
Attention to different needs,
beliefs and attitudes, access to services, etc.

Regarding health of migrants, national levels define rights and general rules, local level implement actions, while the regional level should create the conditions and have sufficient relevant specificity which need to be explored

Aim of the project

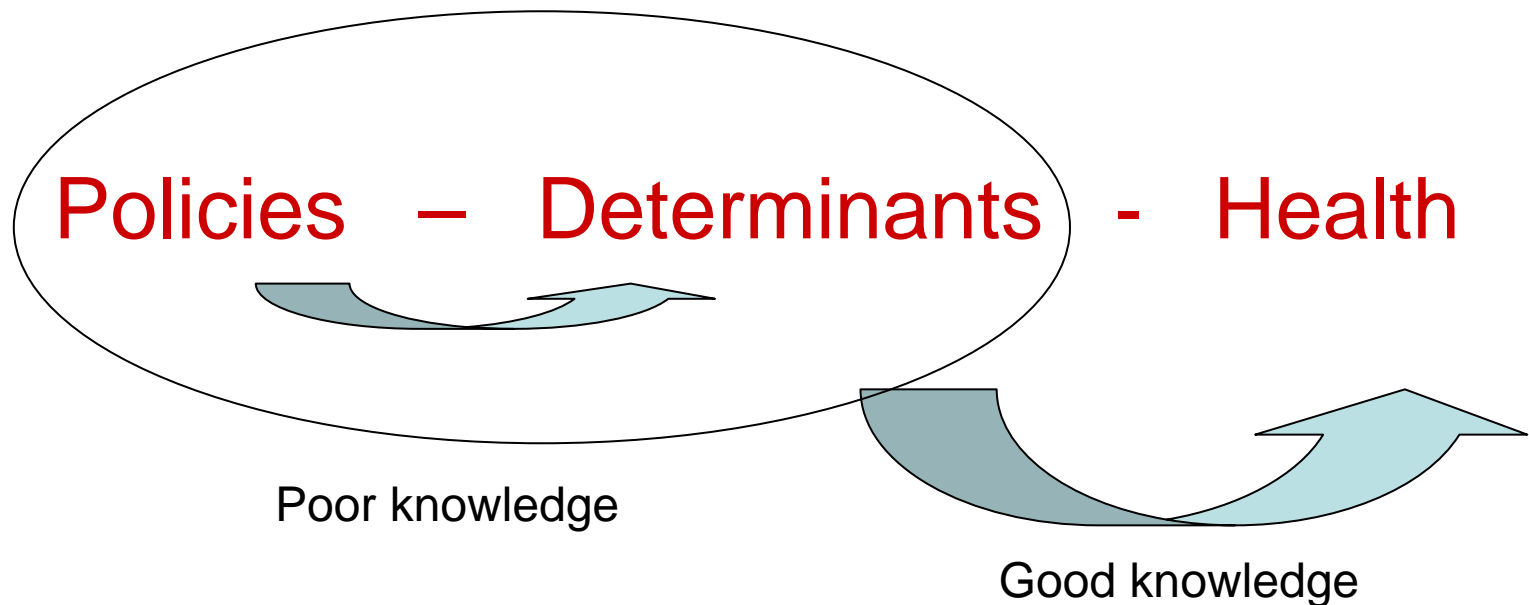
to describe strategies and actions adopted at regional level concerning the health of migrants and health services provided,

in order to identify solutions
and to help in making decisions

Main questions

- ❑ Which data best describe the health situation of migrants ?
- ❑ Which approaches and interventions are used in the RHN Regions ?
- ❑ Which interventions best improve access to health services, healthcare appropriateness, and the state of health of migrant people ?

We have to produce evidences about efficacy of different policies in improving health of migrants



Participating Regions

North Rhine
Westphalia

Västra
Götaland

Varna

Tuscany

Emilia-
Romagna

Sicily

Veneto

Catalonia



Szabolcs-
Szatmar

Sunik

Ticino

North West
England

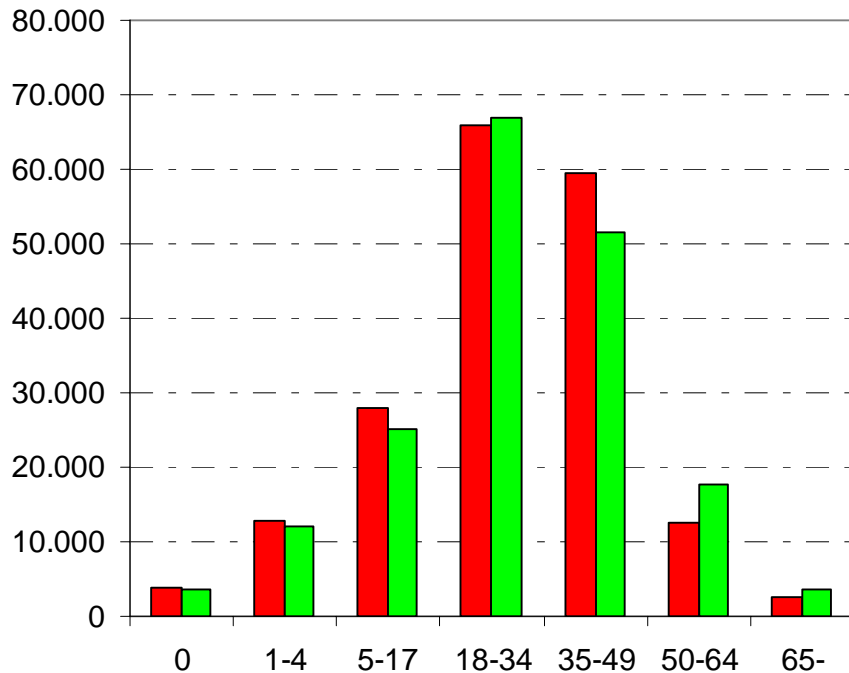
Wales

International
Organization
for Migration

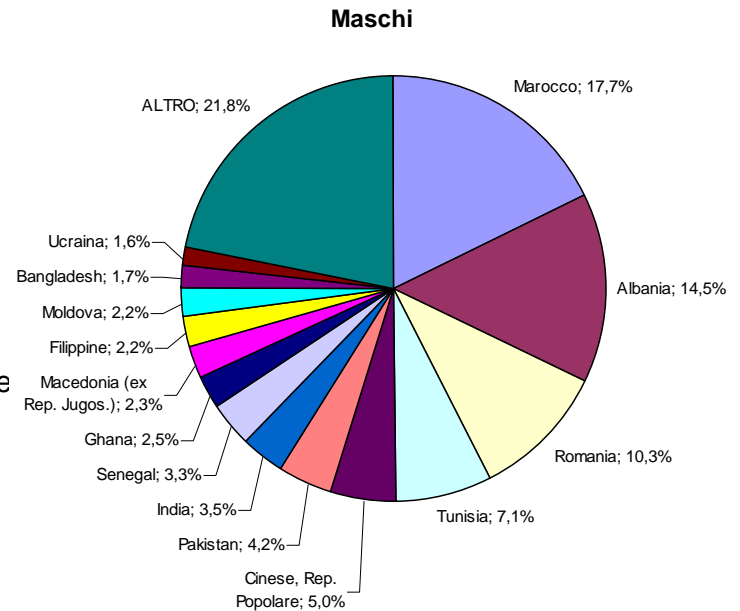
WHO European
Office of Venice

in Emilia-Romagna

366,000 migrants (8.6 %) + about 80.000 irregular



■ Maschi
■ Femmine



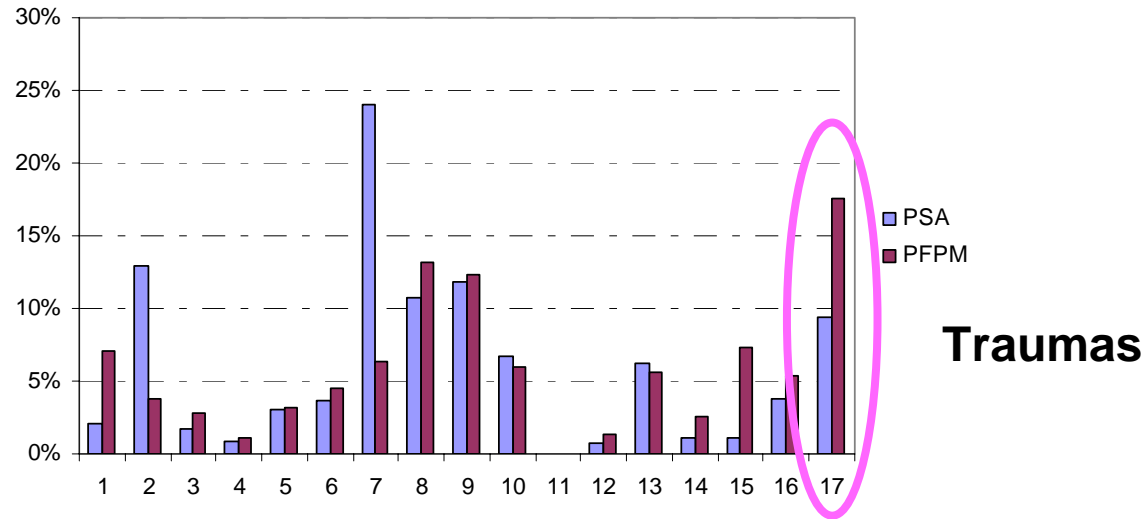
What is a community when we speak 100 languages ?

Migrants have strong reasons and have to be young and whealty

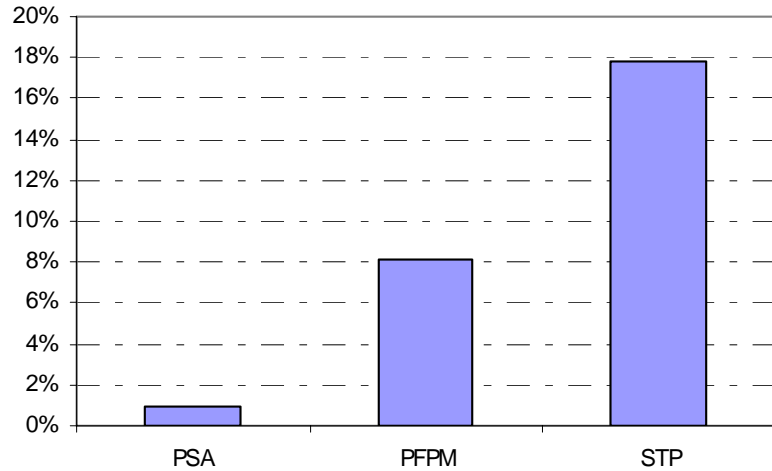
Hospital admissions diagnosis

Migrants use less health services

Migrants get more risks in the new condition

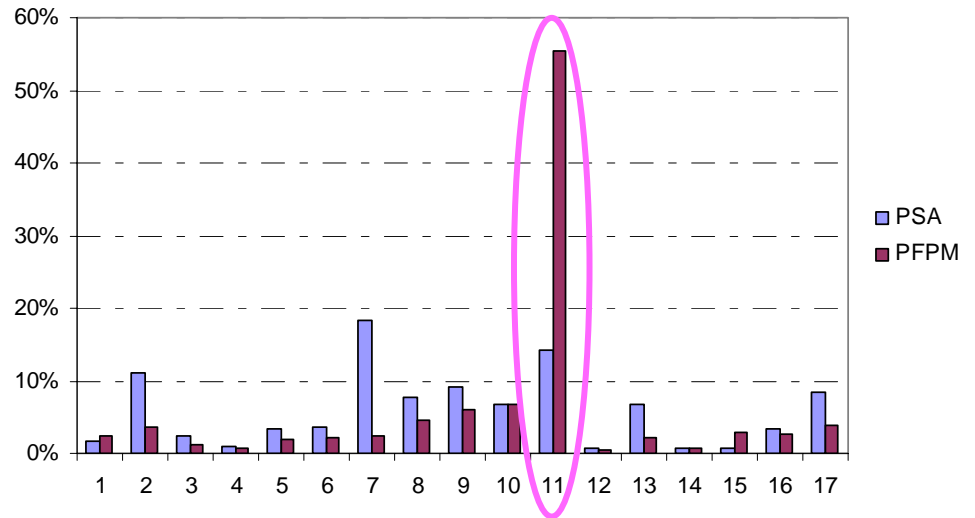


Hospital admissions diagnosis



% of hospitalization for abortion (2006)

Pregnancy complications



Straordinary solutions for ordinary policies ?

- ❑ Triennial programme for social integration of foreign citizens – different policies
- ❑ Regional social and healthcare plan
- ❑ Participation in public life
- ❑ Regional centre against discrimination
- ❑ Regional observatory on migration
- ❑ Economic support to municipalities and NGOs
- ❑ Economic support for housing, school,..
- ❑ Intercultural mediation
- ❑ Centre for foreign family's health for irregular migrants and specific care paths
- ❑ Language cultural mediation service
- ❑ Special attention to cultural differences (religions, foods,..)
- ❑ Information campaigns
- ❑ Empowerments actions
- ❑ Training health professionals
- ❑ .
- ❑ .